



## PRODUCT DIMENSIONS & SPECIFICATIONS

### AFW SERIES WALL MOUNT HYDRONIC HEAT AIR HANDLERS

#### STANDARD FEATURES

##### APPLICATION VERSATILITY

Front or bottom return air. Offset hanging brackets attach to unit and wall to allow hanging inside closet. Can be AHRI matched with most brands of air conditioners or heat pumps. ETL listed for use with either R22 or R410a when a proper metering device is used.

##### MOTOR

Pre-programmed, 5-speed, ECM motors that ensure higher efficiency and increased energy savings by delivering constant torque during operation.

##### LOW LEAKAGE CABINET

Less than 2% air leakage from cabinet when tested in accordance with ASHRAE standard 193. Unit must be installed according to Aspen installation instructions. Sturdy, fully insulated galvanized steel cabinet; stick pins ensure 1/2" insulation remains in place. Unit ships with disposable filter.

##### MODULAR HYDRONIC HEAT KITS

Heat kits available with either circuit breakers or terminal blocks. Available in 2, 3 & 4 row, providing 16,000 to 59,000 BTU's of heat. Heat kits are easily installed in the field using molex plugs or can be ordered factory-installed. Freeze stat is standard, wired into circulating pump control circuit. Controls are accessible from the front for easy service. Electrical connections can be made from the top or left. Disconnect does not protrude through the wall panel. Fan time delay relay standard for increased efficiency. Heat kits are available with or without circulating pump and check valve. Units are provided with auxiliary relay for remote pump. Schrader ports are standard on water-out manifold, hose bib available as an option. Totally lead free constructed coil. Suitable for potable applications.

##### BLOWER

Direct drive multi-speed blowers circulate air quietly and efficiently. Motor speeds can be easily selected via motor terminals. Swing mounted blowers can be easily removed for service.

##### ELECTRONIC CONTROL BOARD

An electronic board controls the functioning of the system reducing moving parts. The board provides for various hot water supply source connections and the blower time delay to maximize heat/cool extraction. As an enhanced feature the pump circulates hot water every 6 hours to prevent coil freeze during off cycle.

##### DX COIL

High efficiency rifled copper tubes/enhanced aluminum fins provide maximum heat transfer. All coils immersion tested at 500 psi then nitrogen pressurized and factory sealed for maximum reliability. Liquid-line Schrader allows pre-installation pressure testing. Available with either check style flowrater or TXV metering device. Field-installable TXVs are also available. Galvanized metal drain pan with bottom primary and secondary drain connections or alternate right side primary. All connections 3/4" FPT. Access door allows for coil cleaning.

##### WARRANTY

Five-year limited parts warranty.

##### OPTIONS

See options menu.



Representative image only. Some models may vary in appearance. Due to continuous product improvement, specifications are subject to change without notice.



AIR HANDLERS  
AFW

Phone: 281.441.6500  
Toll Free: 800.423.9007  
Fax: 281.441.6510  
[www.aspenmfg.com](http://www.aspenmfg.com)

**HARDI**  
PROUD MEMBER

**MEMBER**  
**AIRI**  
AIR CONDITIONING, HEATING,  
& REFRIGERATION INSTITUTE  
"we make life better"

**ETL**  
US

**R-410a**  
**READY**

**5 YEAR**  
LIMITED WARRANTY\*

**ASSEMBLED**  
**IN THE**  
**USA**

\* For complete warranty details visit [www.aspenmfg.com](http://www.aspenmfg.com).

## HEATING AND COOLING PERFORMANCE AND ELECTRICAL DATA

UNIT MODEL	PERFORMANCE DATA							ELECTRICAL DATA	
	HYDRONIC HEAT KIT MODEL	NOMINAL COOLING (BTUS)	HEATING COIL	Hydronic Coil Delta P.	HEATING CAPACITY [BTU] @ 3.5 GPM			MINIMUM CIRCUIT AMPACITY [MCA]	MAX BREAKER OR FUSE SIZE
			ROW	Ft. Water	ENTERING WATER TEMP				
					120°	140°	180°		
AFW 18	U[C,T]2S(P,L)	18,000	2	3	18,800	26,600	42,300	6.6	15
	U[C,T]3S(P,L)		3	1.8	21,600	30,400	48,500		
AFW 24	U[C,T]2S(P,L)	24,000	2	3	21,000	30,100	48,000	6.6	15
	U[C,T]3S(P,L)		3	1.8	24,700	34,800	55,600		
AFW 30	U[C,T]2S(P,L)	30,000	2	3	23,200	32,800	52,500	9.1	15
	U[C,T]3S(P,L)		3	1.8	27,000	38,200	61,100		
	U[C,T]4S(P,L)		4	1.1	28,300	40,100	64,000		
AFW 36	U[C,T]2S(P,L)	36,000	2	3	24,700	35,000	56,000	9.1	15
	U[C,T]3S(P,L)		3	1.8	29,900	41,000	65,500		
	U[C,T]4S(P,L)		4	1.1	30,400	43,000	68,800		

## BLOWER DATA

MODEL	SPEED TAP	MOTOR HP	MOTOR AMPS	MOTOR VOLTAGE	CFM V. EXTERNAL STATIC *				
					0.10	0.20	0.30	0.40	0.50
AFW18 & AFW 24	TAP 5	1/3	4.8	120	900	851	800	742	682
	TAP 4				652	630	591	556	530
	TAP 3				500	476	452	421	400
	TAP 2				400	381	360	339	312
	TAP 1				900	851	800	742	682
AFW30 & AFW36	TAP 5	1/2	6.8		1150	1087	1030	975	910
	TAP 4				1080	1048	1010	960	895
	TAP 3				900	862	825	796	745
	TAP 2				700	663	632	600	552
	TAP 1				500	473	449	421	395

\*Dry coil with filter

## AIR HANDLER CHASSIS NOMENCLATURE

AFW	18	G	-001
AFW = 115V X13 Motor Vertical Wall Mount	Nominal tonnage (MBTUH)	<u>Metering device</u> 4 = non-bleed A/C or H/P R410 TXV B = 20% bleed A/C or H/P R22 TXV F = Flo-rater G = R410a Flo-rater X = non-bleed A/C or H/P R22 TXV	Option Code

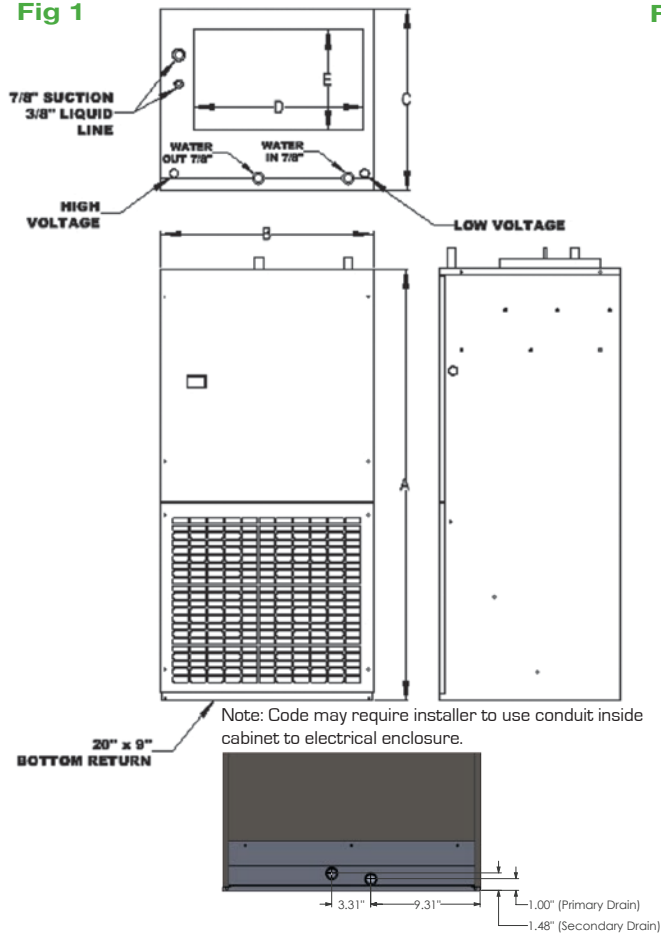
## HYDRONIC HEAT KIT NOMENCLATURE

U	C	2	S	P
Wall Mount Hydronic Heat	<u>Interruption</u> C = Circuit Breaker T = Terminal Block	<u># of rows</u> 2 = 2 rows 3 = 3 rows 4 = 4 rows	S = 18 - 36	P = Taco 006 Bronze Pump 8 = Taco 008 Bronze Pump L = less pump

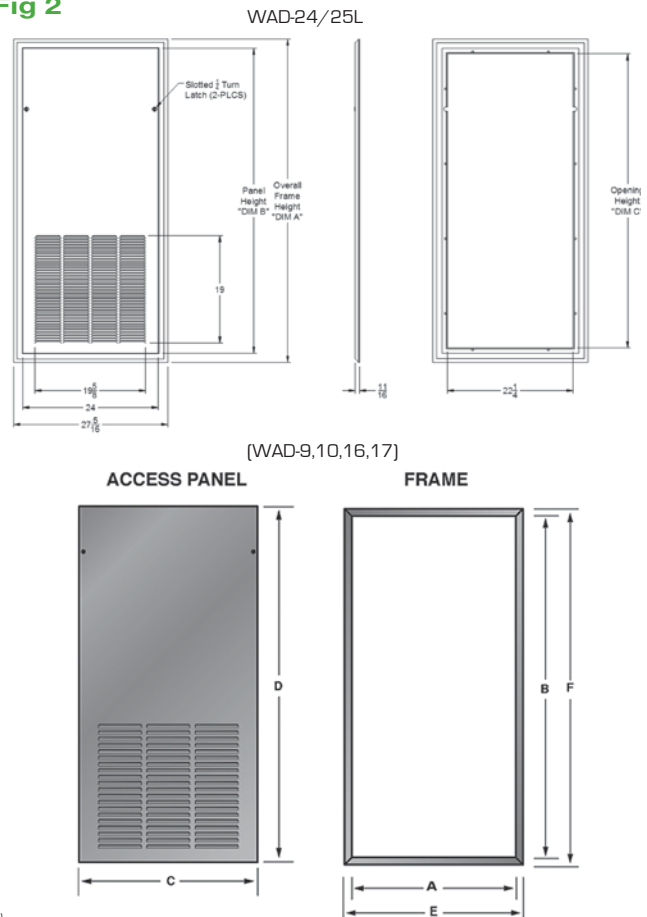
## DIMENSIONS AND SPECIFICATIONS (In. [mm]) (Fig 1)

MODEL	HEIGHT A	WIDTH B	DEPTH C	D	E	FILTER SIZE	PISTON SIZE	SHIP WEIGHT (LBS)	SKID QTY
AFW18*	44-1/2 [113]	22 [56]	18 3/4 [48]	17 5/8 [45]	10-1/2 [27]	20X20	0.055	110	4
AFW24*	44-1/2 [113]	22 [56]	18 3/4 [48]	17 5/8 [45]	10-1/2 [27]	20X20	0.059	110	4
AFW30*	44-1/2 [113]	22 [56]	18 3/4 [48]	17 5/8 [45]	10-1/2 [27]	20X20	0.068	118	4
AFW36*	44-1/2 [113]	22 [56]	18 3/4 [48]	17 5/8 [45]	10-1/2 [27]	20X20	0.074	118	4

**Fig 1**



**Fig 2**



## DIMENSIONS AND SPECIFICATIONS (Fig 2)

PANEL MODEL	FOR USE WITH	FINISH	OPENING SIZE		PANEL DIMENSION		FRAME DIMENSION		# OF PANELS
			A"	B"	C"	D"	E"	F"	
WAD-9(S/L)	AFW	Embossed	22 1/4	46	24 1/4	48	24 1/8	47 7/8	1
WAD-10(S/L)	AFW	Embossed	22 1/4	52	24 1/4	54	24 1/8	53 7/8	1
WAD-16(S/L)	AFW	Smooth	22 1/4	52	24 1/4	54	24 1/8	53 7/8	1
WAD-17(S/L)	AFW	Smooth	22 1/4	46	24 1/4	48	24 1/8	47 7/8	1
WAD-24L	AFW +6"	Smooth	24 1/4	52	24	53 15/16	27 5/16	57 1/4	1
WAD-25L	AFW	Smooth	24 1/4	46	24	47 15/16	27 5/16	57 1/4	1



Phone: 281.441.6500  
Toll Free: 800.423.9007  
Fax: 281.441.6510  
[www.aspenmfg.com](http://www.aspenmfg.com)

## CEILING AND WALL ACCESS DOORS

### STANDARD FEATURES

#### VERSATILITY

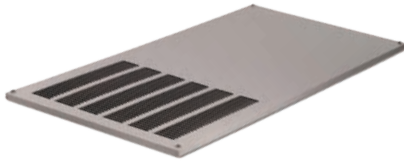
Equipped with hidden frame feature. Fastens to the outside wall surface and does not have to perfectly match the hole opening. Frame screws are not visible after installation. Available in either solid (S) or louvered (L) style.

#### MATERIALS

Galvanized steel construction with powder paint finish. Can be latex painted in the field.

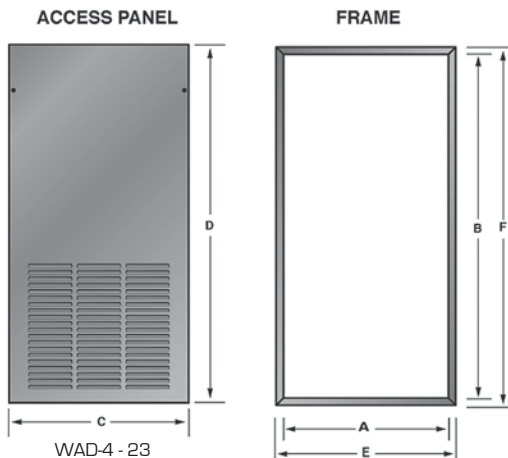
#### WARRANTY

Five-year limited parts warranty.



### DIMENSIONS AND SPECIFICATIONS

PANEL MODEL	FOR USE WITH	FINISH	OPENING SIZE		PANEL DIMENSION		FRAME DIMENSION		# OF PANELS
			A"	B"	C"	D"	E"	F"	
CAD-4(S/L)	FCB	Embossed	22 3/4	58	24 3/4	60	24 5/8	59 7/8	2
CAD-5(S/L)	FFC/FFD 18/24	Embossed	23 7/8	47 5/8	25 7/8	49 5/8	25 3/4	49 1/2	2
CAD-5W(S/L)	FFW 18/24	Embossed	23 7/8	57 5/8	25 7/8	59 5/8	25 3/4	59 1/2	2
CAD-6(S/L)	FCW	Embossed	22 3/4	64	24 3/4	66	24 5/8	65 7/8	2
CAD-7(S/L)	FFC/FFD 30/36 FFW 30/36	Embossed	23 7/8	61 7/8	25 7/8	63 7/8	25 3/4	63 3/4	2
WAD-4(S/L)	FTB	Embossed	20 3/4	39 1/2	22 3/4	41 1/2	22 5/8	41 3/8	1
WAD-5(S/L)	FWB	Embossed	20 3/4	44	22 3/4	46	22 5/8	45 7/8	1
WAD-6(S/L)	FWB-013	Embossed	20 3/4	50	22 3/4	52	22 5/8	51 7/8	1
WAD-7(S/L)	AAW/AEW 18/24	Embossed	22 1/4	39 1/2	24 1/4	41 1/2	24 1/8	41 3/8	1
WAD-8(S/L)	AAW/AEW 30/36	Embossed	22 1/4	42 1/2	24 1/4	44 1/2	24 1/8	44 3/8	1
WAD-9(S/L)	ABW/AFW	Embossed	22 1/4	46	24 1/4	48	24 1/8	47 7/8	1
WAD-10(S/L)	ABW/AFW +6"	Embossed	22 1/4	52	24 1/4	54	24 1/8	53 7/8	1
WAD-16(S/L)	ABW/AFW +6"	Smooth	22 1/4	52	24 1/4	54	24 1/8	53 7/8	1
WAD-17(S/L)	ABW/AFW	Smooth	22 1/4	46	24 1/4	48	24 1/8	47 7/8	1
WAD-18(S/L)	AAW/AEW 18/24	Smooth	22 1/4	39 1/2	24 1/4	41 1/2	24 1/8	41 3/8	1
WAD-19(S/L)	AAW/AEW 30/36	Smooth	22 1/4	42 1/2	24 1/4	44 1/2	24 1/8	44 3/8	1
WAD-20(S/L)	AAW/AEW 19/20/25/26	Embossed	20 3/4	38	22 3/4	40	22 5/8	39 7/8	1
WAD-21(S/L)	AAW/AEW 31/37	Embossed	24 1/4	38	26 1/4	40	26 1/8	39 7/8	1
WAD-22(S/L)	AAW/AEW 19/20/25/26	Smooth	20 3/4	38	22 3/4	40	22 5/8	39 7/8	1
WAD-23(S/L)	AAW/AEW 31/37	Smooth	24 1/4	38	26 1/4	40	26 1/8	39 7/8	1
WAD-24L	ABW/AFW +6"	Smooth	24 1/4	52	24	47 15/16	27 5/16	57 1/4	1
WAD-25L	ABW/AFW	Smooth	24 1/4	46	24	53 15/16	27 5/16	57 1/4	1



#123156 Revised 01/09/20. In keeping with its policy of continuous progress and product improvement, Aspen reserves the right to make changes without notice and incurring obligation. © 2018

### INSTALLATION DETAIL

